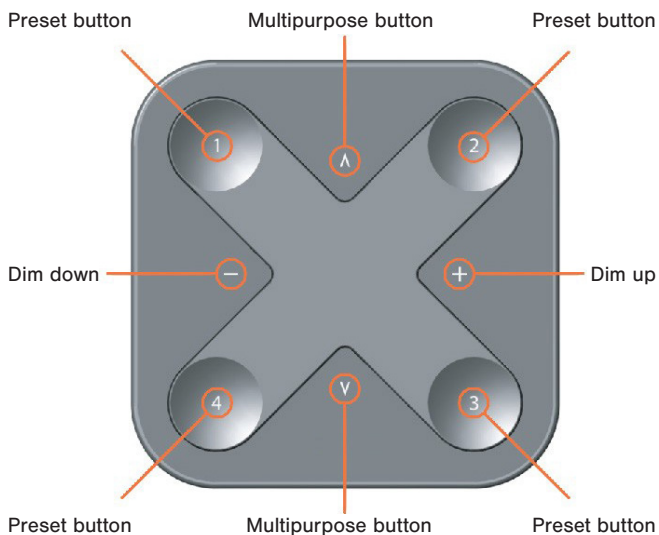


## XPRESS-LR



### BASIC FUNCTIONS

The preset buttons of Xpress-LR can be configured via the Casambi app. A light indicates the selected preset.

#### Dim up, Dim down:

- Smooth dimming of last chosen preset

#### Multipurpose buttons:

- Change of color temperature in steps of 25 Kelvin
- Change of the indirect/direct ratio

#### Preset buttons:

- Individual luminaire control
- Group control
- Control of all luminaires
- Recall scenes
- Recall animations

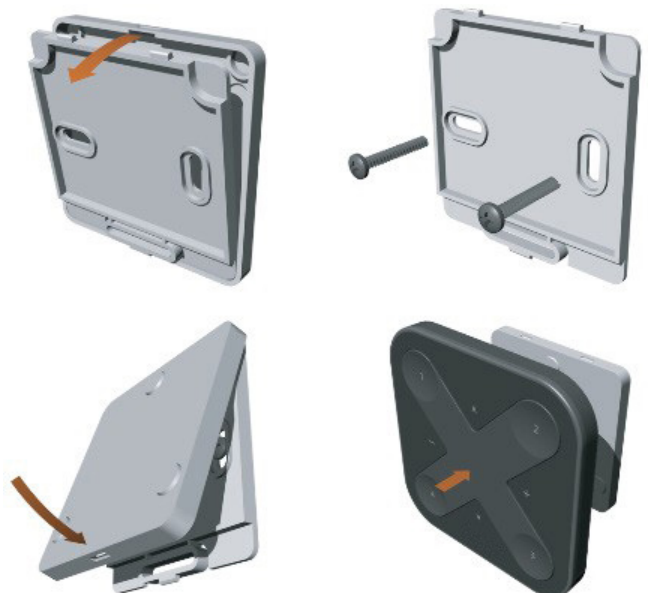
### PRODUCT DESCRIPTION

Xpress-LR is a wireless, long-range, Casambi-enabled, user interface that brings huge flexibility to interior design as furniture can be replaced and walls can be rebuilt without having to take the wiring of switches or switch placement into account. The switch can be kept wherever the user needs it and it gives direct access to all the important Casambi lighting control functionalities.

### CASAMBI MESH-NETWORK COMPATIBILITY

There are different radio modes that can be selected when creating a network in the Casambi App: 'Balanced', 'Better Performance' and now 'Long Range' options. The Xpress-LR enables long-range capabilities only when the long-range radio mode has been selected and all the other devices within the network are long-range capable. It will revert to the shorter, standard range when deployed in networks set to 'Balanced' or 'Better Performance' modes.

### MOUNTING



The Xpress-LR switch includes a wall mounting bracket. The Xpress-LR magnetically attaches to the mounting bracket.

**SMART FUNCTIONS****Dimming**

- **Hold the Dim down or Dim up button:**  
Smooth dimming of last chosen preset, cycle takes 5 seconds
- **Press the Dim down button:**  
Chosen preset goes to 0%
- **Press the Dim up button:**  
Chosen preset goes to 100%

**Preset Buttons**

- **Press:**  
The chosen preset (luminaire control, group control, all luminaires, scene recall or animation recall) will turn on
- **Press again:**  
The chosen preset (luminaire control, group control, all luminaires, scene recall or animation recall) will turn off

**Color Temperature**

- **Hold the Multipurpose button:**  
Changes color temperature smoothly, cycle takes 5 seconds
- **Press the upper Multipurpose button:**  
Changes to the warmest color temperature
- **Press the lower Multipurpose button:**  
Changes to the coldest color temperature

**Turn Off**

- **Press the Dim down and Dim up button for more than 1 second:**  
Turns all luminaires off in selected network

**Indirect/Direct Ratio\***

- **Hold the upper Multipurpose button:**  
Dims up smoothly the indirect lighting, cycle takes 5 seconds
- **Hold the lower Multipurpose button:**  
Dims up smoothly the direct lighting, cycle takes 5 seconds
- **Press the upper Multipurpose button:**  
The indirect part goes to max level
- **Press the lower Multipurpose button:**  
The direct part goes to max level

\*sum of indirect/direct in all cases 100%



**TECHNICAL DATA****Input**

- Voltage: 3VDC
- Battery Type: CR2430 Lithium Coin Cell

**Radio Transceiver**

- Operating frequencies: 2.402...2.480 Ghz
- Maximum output power: +8 dBm

**Operating conditions**

- Operating temperature: 0°C... +40°C
- Storage temperature: -25°C... +70°C
- Max. relative humidity: 0...80%, non-cond.

**Mechanical data**

- Dimensions: 90 x 90 x 12 mm
- Weight: 72 g
- Degree of protection: IP20 (indoor use only)

**Certifications**

- CE
- AU/NZ

**BATTERY REPLACEMENT**

Remove the locking screw located on the battery lid cover using a Pozidriv screwdriver PZ1. Slide the cover downwards and replace the old battery. The battery type is CR2430. Always replace the battery with the same type. Reinstall the battery lid cover and tighten the screw. Properly dispose of the old battery at your nearest hazardous waste collection site.

**DISPOSAL INSTRUCTIONS**

In line with EU Directive 2012/19/EU for waste electrical and electronic equipment (WEEE), this electrical product must not be disposed of as unsorted municipal waste. Please dispose of this product by returning it to the point of sale or to your local municipal collection point for recycling.

**WARNINGS (AU)**

Contains a button cell battery (also referred to as a coin cell battery), which is hazardous if swallowed – see instructions. The battery can cause severe or fatal injuries in 2 hours or less if swallowed or placed inside any part of the body.

If you suspect your child has ingested a button cell battery, call the Poisons Information Centre (24/7) immediately on 131126 from anywhere in Australia. Medical attention shall be sought immediately if it is suspected the battery has been swallowed or placed inside any part of the body.

Properly dispose of button cell batteries immediately in an outside bin, out of reach of children, and recycle them at your nearest hazardous waste collection site.

**COMPLIANCE STATEMENT**

Casambi declares that the Xpress-LR fully complies with Directive 2014/53/EU.

Further information can be found in the download section of the Casambi Website: [www.casambi.com/ecosystem/](http://www.casambi.com/ecosystem/), proceed to the Xpress-LR product page.

Casambi bestätigt, dass der Xpress-LR Schalter vollständig die Anforderungen der Directive 2014/53/EU erfüllt.

Weitere Informationen erhalten Sie unter Downloads auf der Casambi Webseite: [www.casambi.com/ecosystem/](http://www.casambi.com/ecosystem/), weiter zur Xpress-LR-Produktseite.