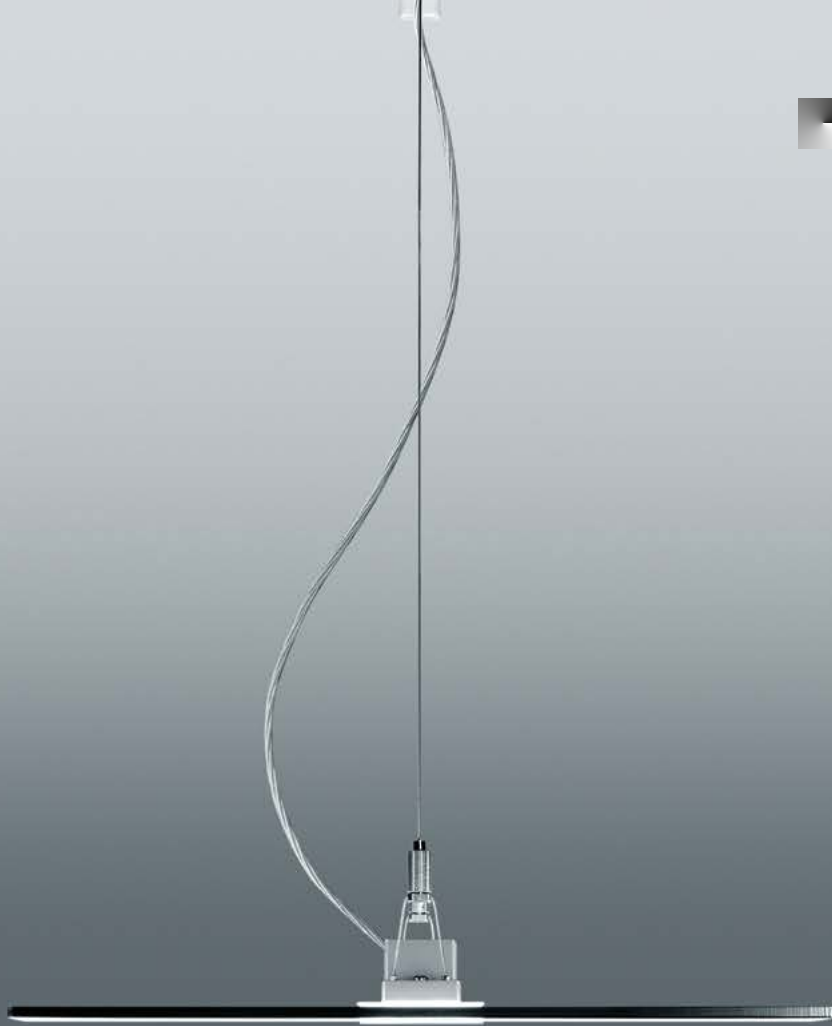




ZUMTOBEL



**VAERO**

THE HIGH ART OF RESTRAINT



reddot design award  
winner 2018







# VAERO

The high art of restraint

**Fascinated by the idea of total reduction, a luminaire was created that only draws attention when it is switched on. VAERO is more light than luminaire. Its design language – streamlined and clear in the true sense of the word – discreetly integrates into any room architecture, making it the ideal choice for various office areas – from the classic workplace environment to the creative communication zone.**

VAERO: direct/indirect lighting ratio of 55:45 percent

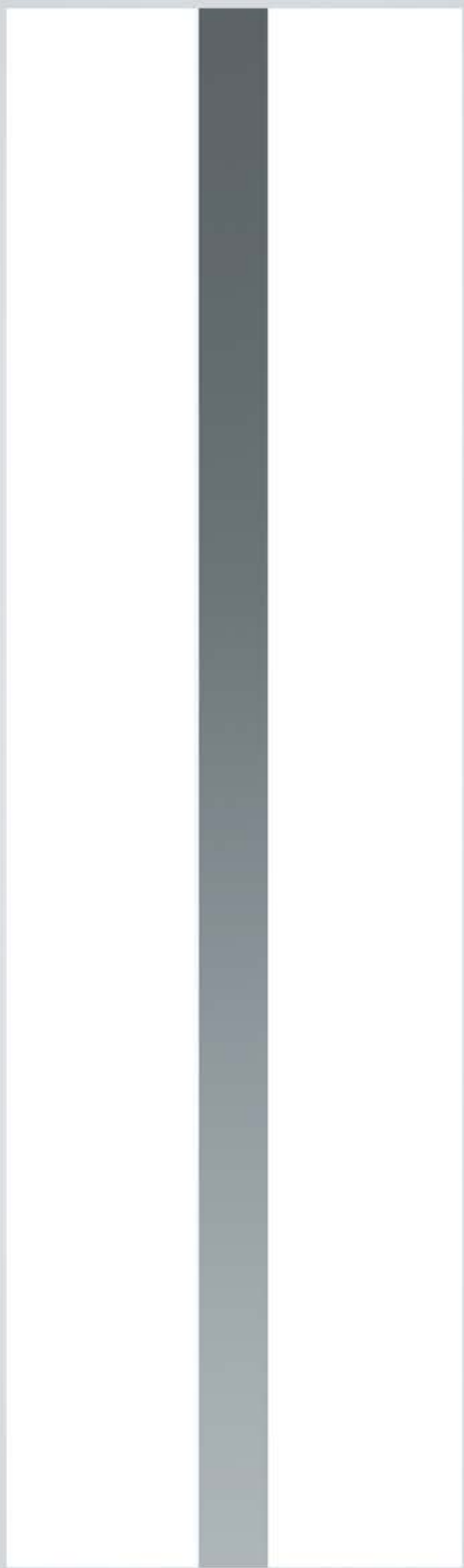


# Light off!

Pendant luminaire with a clear view

**Never before has a luminaire been simultaneously so effective and so inconspicuous. When switched off, the transparent lighting wings are hardly detectable. All that remains is a narrow middle bar, which conceals the flat converter box. This helps rid the ceiling of distracting elements.**







# Light on!

Suspended light without a frame

**When switched on, the pendant luminaire transforms into a magical light object – as if VAERO is no longer a light fitting, but quite simply pure light. Frameless and transparent, the super-thin light-emitting surface perfects the puristic design.**





*140 lm/W*

VAERO LED5000-840

# Light from the side

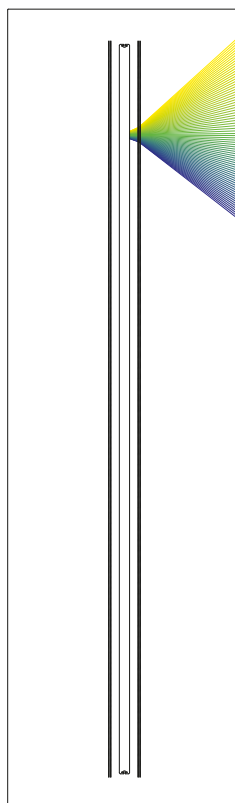
Technology that transforms the transparency

**The essential requirement for the unique design of the VAERO pendant luminaire with its invisible qualities is state-of-the-art Side-Lit technology. This guides the light from linear light sources into the transparent light conductor panels and distributes it evenly from the centre to the edge.**

## Side-Lit technology

Light from the LED light sources is decoupled from the side and evenly distributed across the light conductor panels. Defined structures disperse the individual LED points of light. The result is a homogeneous illumination of the light-emitting surface without the formation of stripes. The combination of direct/indirect lighting and wide indirect light distribution creates balanced brightness and reduces contrasts. This improves visual comfort, especially in larger office areas. Excellent glare control facilitates concentrated work in front of computer screens. These different components ensure a pleasant lighting atmosphere within a room and thereby increase the wellbeing of employees.

Another benefit: The latest generation of LED modules guarantees perfect light quality and helps ensure a very long luminaire operating life. The new VAERO therefore fulfils the maximum demands placed on modern office lighting in terms of both visual comfort and efficiency.



# DOT 28

Award-winning canopy technology



DOT 28 cord suspension in fair-faced **concrete ceiling**.



reddot award 2015  
winner



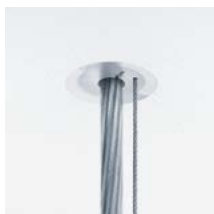
Pendant luminaires as decorative lighting objects create timeless aesthetics for every interior. In line with this principle, the new DOT 28 suspension system supports a graceful and puristic appearance by perfectly harmonising with the design language of LED pendant luminaires. All electrical and mechanical connections are concealed in the ceiling, adding the ideal final touch to the floating appearance of VAERO. And so the effect of the space can be truly appreciated – in an elegant and undisturbed manner.

Design: Georg Bechter Licht, Langenegg | AT

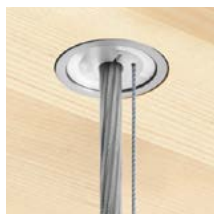


The only element visible from the outside is a 28 mm ceiling rose that integrates flush into a **plasterboard**, concrete or wooden ceiling.

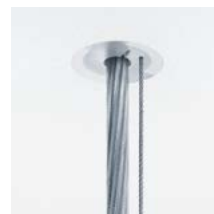
Concrete ceiling



Solid wood ceiling



Plasterboard ceiling



---

### **Highest aesthetic demands**

With a frameless transparent light-emitting surface, VAERO is the closest thing to an invisible luminaire. Clear lines and the absence of a ceiling-mounted converter box complete the minimalistic design.

---

### **Suitable for virtually any room architecture**

The discreet and puristic design of VAERO makes it an attractive luminaire for various office areas – from classic to creative. Virtually invisible, the pendant luminaire highlights the merits of a particular environment without dominating it.

---

### **Ergonomic work light**

With direct and indirect emittance, the VAERO pendant luminaire distributes light evenly throughout the space. The high glare control satisfies all the requirements for daily office life and the widespread usage of devices with different types of screens.

---

### **Wide range of colours**

With models in white, silver, black, natural aluminium and bronze, the filigree middle bar supports genuine creative freedom. This allows the pendant luminaire to be integrated perfectly into various architectural concepts.

---



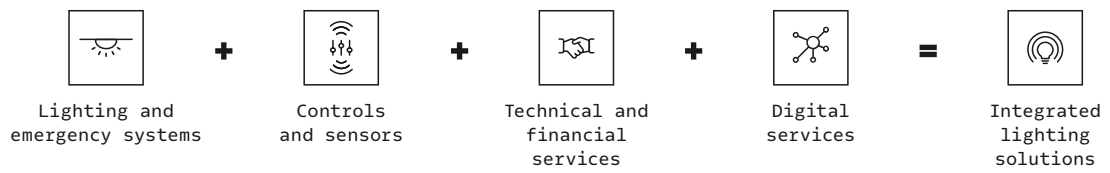
## VAERO

### LED pendant luminaire

#### Overview

Installation	LED light colour	Controls	Luminous flux	Casing colour
	<p>3000K warm white</p>	<p>DALI dimmable basicDIM Wireless</p>	<p>5000 lumens 6600 lumens</p>	<p>White</p>
<p>Pendant luminaire</p>	<p>4000K neutral white</p>			<p>Silver</p>
	<p>2700 K – 6500 K tunableWhite</p>			<p>Bronze</p>
				<p>Black</p>

# T H E L I G H T



[zumtobel.com/contact](https://zumtobel.com/contact)