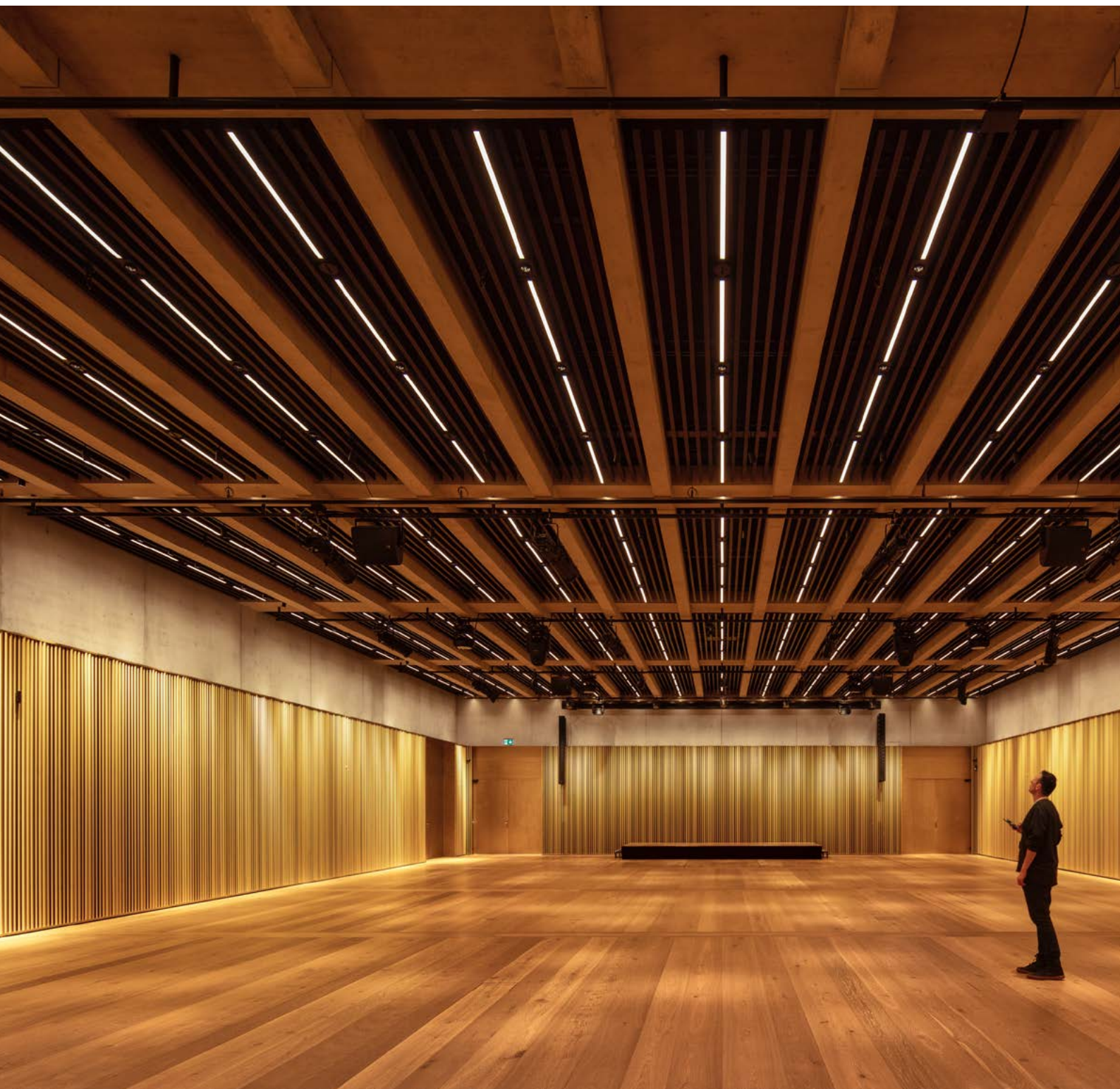




ZUMTOBEL

SLOTLIGHT INFINITY II

LINEAR. FUTURE-PROOF. THE NEW LIGHT LINE.



Kunsthaus Zurich, Zurich | CH
Architecture: David Chipperfield Architects



LIGHT AS A LINE

The success story continues.

Improved optics, timeless design, maximum efficiency and even greater project design freedom: SLOTLIGHT infinity II is continuing the success story of Zumtobel's light line. It can be unrolled to any length, as a continuous line or around corners, in a creative X or T shape. Conceived using Zumtobel's Circular Design Rules, it can be configured in just a few clicks, with effortless customisation. Whether in an office, educational institution, airport, art gallery or shopping centre: SLOTLIGHT infinity II provides a reliable basis for any number of applications. With IP54 degree of protection and emergency lighting in all standard lengths.

SLOTLIGHT – the unique light line since 1999.



Light creates rooms.
SLOTLIGHT infinity II can also be thought of as a "lighting framework" and connecting element for the entire building. The light line structures high-traffic areas such as hallways and produces versatile lighting.



RELIABLE BASIS, DIVERSE APPLICATIONS

Less complexity but more versatility. Forward-thinking but compatible with SLOTLIGHT infinity II. Greater flexibility with the same light quality. SLOTLIGHT infinity II combines seemingly opposite characteristics in one slim light line. Whether for indoor or protected outdoor areas, for installation as a recessed, surface-mounted or pendant luminaire, SLOTLIGHT infinity II provides a reliable basis for all applications. Seamless. Linear. Ready for potential future uses.

Light – not just as a line,
but as part of the infrastructure.



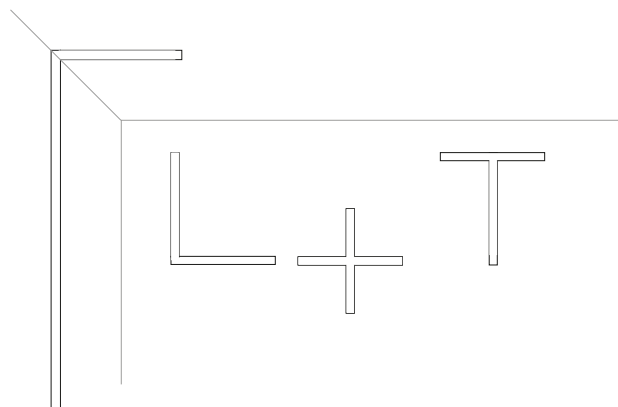
Straight lines. Timeless elegance.

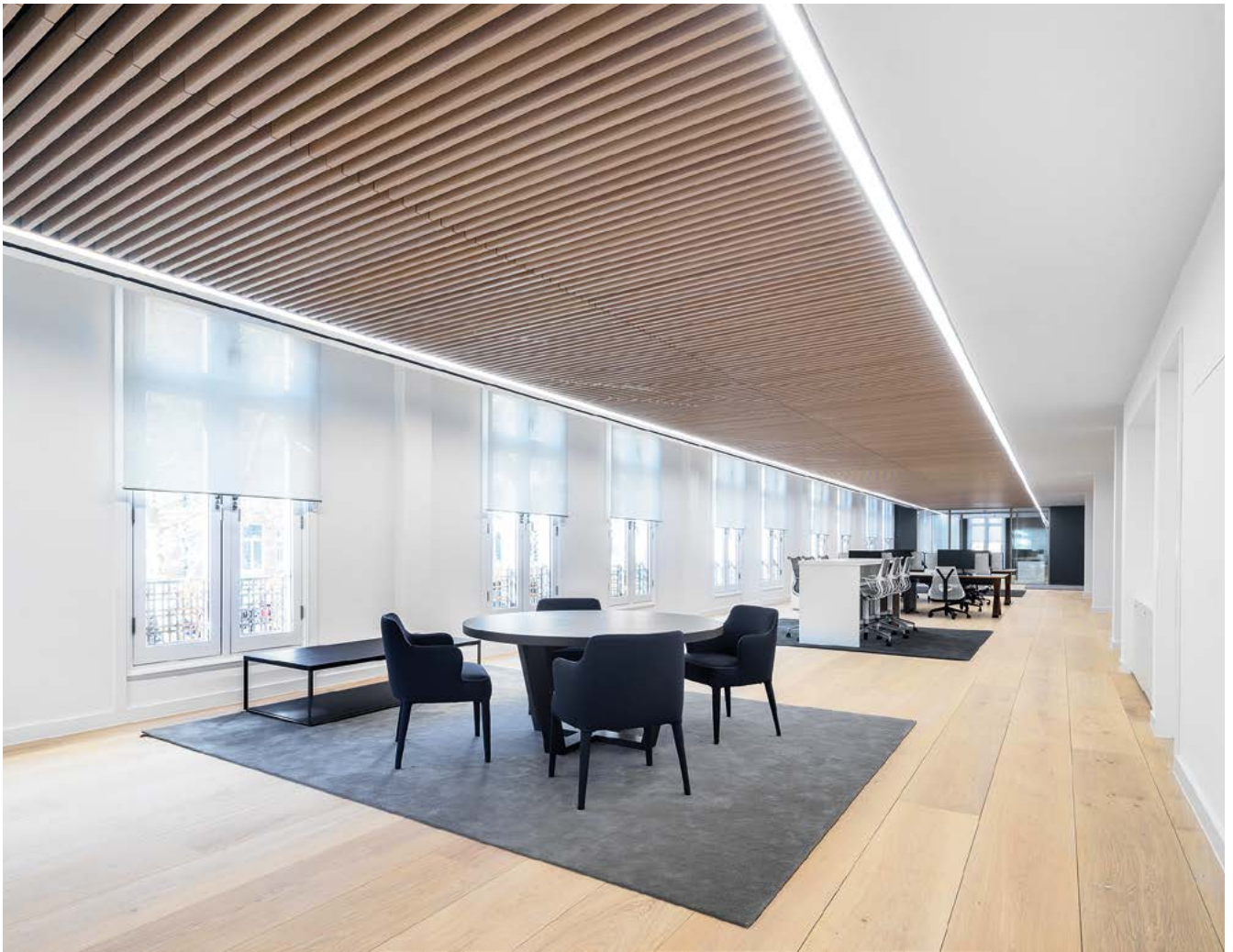
Free from edges and entirely in straight lines, SLOTLIGHT infinity II is the first luminaire in the product family to be available without tapering as standard. Even as a surface-mounted or pendant luminaire, the consistently linear housing fits easily into any type of environment – allowing the architecture to take centre stage. High-quality, stable and conceived on the basis of Zumtobel's Circular Design Rules, it uses less material: the housing height has been reduced by a full six millimetres.



BASIS FOR LIGHT AND INFRASTRUCTURE

Not just parallel lines, but also louvre or cross-shaped lighting installations can be achieved with SLOTLIGHT infinity II. Newly designed connection modules in an L, X and T shape open up any number of design possibilities, along with the existing 90-degree corner connectors. SLOTLIGHT infinity II forms a basis for lighting infrastructure upgrades: additional lighting elements, such as downlights, spotlights or sensors, can be integrated into the light line in the future.





Sky Studios, London | GB
Architecture: Arup Associates, London | GB
Photo: Simon Kennedy



As the channel is empty when delivered, i.e. it does not contain integrated drivers or loop-through wiring, it can be equipped flexibly and customised effortlessly on site in line with the client's requirements.






THE CHANNEL

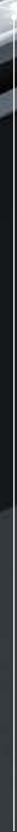
The empty channel in the SLOTLIGHT infinity II provides maximum design freedom. Unlike with predecessor models, the control gear and loop-through wiring are on the LED batten. With no integrated electronics, the channel can be tailored and flexibly adapted to customer needs. The batten, which holds the electronic components, can be moved within the channel as required. The result: a customised light line with no compromises, but with the price security and fast availability of a standard product.



The channel provides the shape of the luminaire - and is available in four multifunctional versions.

Housing colours

-  white RAL 9016
-  silver RAL 9006
-  black RAL 9005

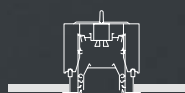


The channel also accommodates indirect LED modules for uniform upward illumination of the ceiling.

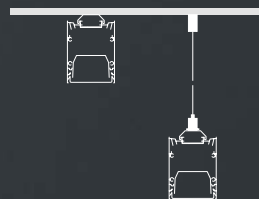
MRC installation channel/
drywall construction



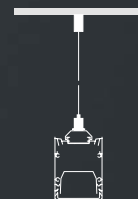
MRT installation channel
with circumferential frame



MSC surface-mounted and
suspended channel
(direct light)



MSP suspended channel
(direct and indirect light)



SLOTLIGHT infinity II exclusively uses a newly developed 7-pole terminal. This contains three phases as well as two lines for DALI and/or emergency lighting, allowing the light line to be flexible and used in multiple versatile ways, for example if emergency lighting applications are incorporated.

With predecessor models, the control gear and loop-through wiring are on the LED batten. The batten, which holds the electronic components, can be moved within the channel as required.



Thanks to the latest LED chip generation, the luminous efficacy has increased by significantly more than 10 per cent. As a result, SLOTLIGHT infinity II offers up to a quarter more light efficiency than its predecessor models overall - depending on the configuration.

Light colours

-  3000 K
warm white
-  4000 K
neutral white
-  tunableWhite
-  RGBW

THE LED BATTEN

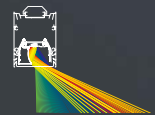
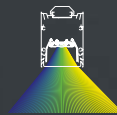
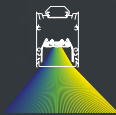
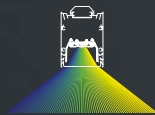
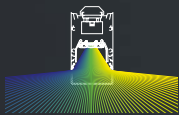
The LED batten contains high-quality, high-performance lighting technology such as the control gear and a state-of-the-art LED module.





up to 158 lm/W

In total, five different optics are available for SLOTLIGHT infinity II. Thanks to its tailored geometry, the SLOTLIGHT infinity II channel can be freely combined with any optic.



Drop Diffuser (DD)

Opal cover (PC)

Office cover (PCO)

Minicell reflectors (MC)

Wall washer (WW)

Diffuse beam

Diffuse beam

Workplace lighting in accordance with EN 12464

Workplace lighting in accordance with EN 12464

Asymmetric beam

UGR < 22

UGR > 25

UGR < 19
L65 < 3000 cd/m²

UGR < 19
Lumen packages up to 3500lm/m

Reception areas, corridors, recreation rooms, breakout zones

Reception areas, corridors, recreation rooms, breakout zones

Offices, schools and meeting rooms

Offices, schools and meeting rooms

Vertical surfaces and flexible features

THE OPTICS

The optics are available in five different versions and can be adapted perfectly to customer requirements. A new feature is the highly efficient drop diffuser with a combination of direct and indirect light. Perfect for lighting designers who want to create a stimulating lighting ambience and are seeking the perfect solution for wall and ceiling illumination (in accordance with EN 12464).

Light you can unroll

The new innovative diffuser in the SLOTLIGHT infinity II is patented as the only rollable drop diffuser on the market, with three-dimensional, projecting optics. With 10 per cent indirect light, little subjective perception of glare but a larger light-emitting surface, the entire light line has a whole new feel.



PRODUCT CONFIGURATION – MORE FLEXIBLE THAN EVER BEFORE

With optimum combination options and improved user-friendliness, SLOTLIGHT infinity II offers completely new possibilities for customising the continuous row. Different optics and even blind covers can be selected with different light distribution (direct or indirect) and light colours (stableWhite, tunableWhite and RGBW) in a single order. This is all thanks to the new product configurator. In a first for our products, tunableWhite is now available for the indirect light proportion too.

LIGHT COLOURS – FREE CHOICE AND ANY COMBINATION

SLOTLIGHT infinity II is available both with stableWhite (3000 K, 4000 K), tunableWhite (2700 – 6500 K) and RGBW. What's special is that both options can be freely combined, with differing proportions of direct and indirect light.

LIGHT COLOURS PLUS OPTICS: ULTIMATE COMBINATIONS

The fully upgraded product configurator offers lighting designers, interior architects and electricians a familiar, intuitive interface and gives them a free hand for individual lighting design. This significantly reduces the workload in the ordering process: a twelve-metre-long continuous row with four different optics can be put together and ordered in one configuration.

At the end of the selection process, the configurator automatically generates a complete, individual parts list in accordance with the dimensions and features selected. It also produces a tailor-made data sheet containing all of the lighting specifications.



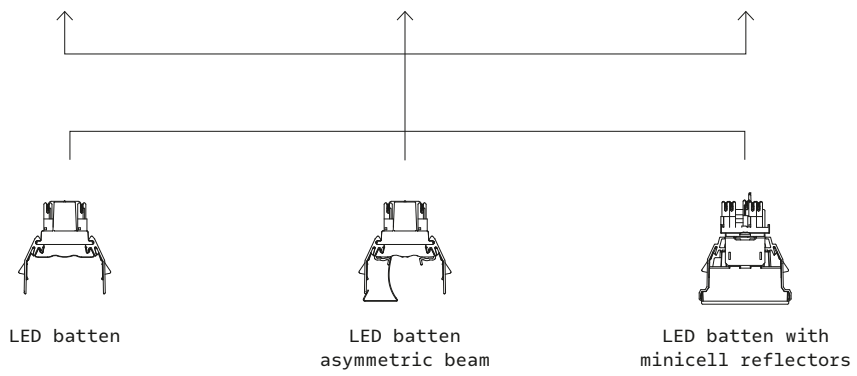
View the product configurator



CHANNEL



LED BATTEN



OPTICS AND SENSORS

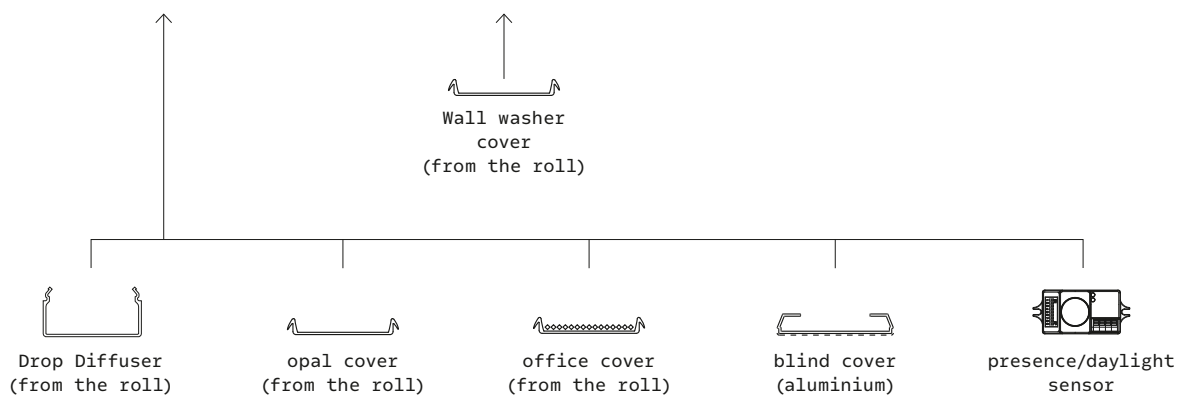




Figure 1:1

EXTREMELY SAFE. HIGHLY PROTECTED.

With protection that's unbeatable. With an IP54 rating, SLOTLIGHT infinity II is protected against splashes and dust on all sides – seamlessly along its entire length. This is a major advantage over previous versions: their IP protection only covered four metres of the continuous row. A new connector and a foldable end cap gasket provide a reliable seal – even in the joint area. The emergency lighting connection in 250 mm increments between 1 and 2 metres guarantees even more security.

DURABLE AND RESISTANT

SLOTLIGHT infinity II is suitable for use in protected outdoor areas, as well as in moisture-prone rooms or hospitals. This is ensured by the IP54-compliant dust and splash protection as well as a new foldable end cap gasket and a connector that seals the luminaire, even in the joint area. As it is incredibly robust, the continuous row can illuminate buildings harmoniously throughout, from covered outdoor areas to the interior. The new generation of light lines is also impressive thanks to its improved resistance and functioning lifespan.

OPTION FOR EVEN GREATER SECURITY

Available in all standard lengths, SLOTLIGHT infinity II can also come with an emergency lighting function in 250 mm increments between 1 and 2 metres. Whether it's in an office building or educational institution, emergency power generators and battery packs ensure maximum security for the people in the building. Light you can rely on. The emergency lighting technology is integrated into the LED batten, allowing maximum flexibility and individual configuration. Already included at the manufacturing stage: every SLOTLIGHT infinity II luminaire is ready for connection to a central emergency lighting system.

CIRCULAR DESIGN. A FUTURE-PROOF CONCEPT.

Whether in the office or an educational institution, in a hallway or airport: as a human-centred, future-proof lighting solution, SLOTLIGHT infinity II helps buildings to be used with joy and success for many generations to come. Not only is this down to the modular design in line with Zumtobel's Circular Design Rules, it is also thanks to the future-proof, incredibly durable channel – which can remain in the property for years as a backbone of the building infrastructure. The “Made in Austria” proof of origin and a recycled material content of 29 per cent top off the sustainability profile of SLOTLIGHT infinity II.

DURABLE, RECYCLABLE MATERIAL COMPOSITION

Zumtobel chooses recycled materials even when manufacturing the light line: the proportion of recycled material in the overall product is up to 65%. Half of the material used is in the high-quality aluminium channel. The metal offers two crucial advantages for the circular economy. First, aluminium is a high-quality material, guaranteeing reliable, durable use over many years. The aluminium channel can even remain in the building and be reused during renovations. Second, aluminium can easily be returned to the raw material cycle at the end of its life time – multiple times in fact, and without losing its outstanding properties. At 75 per cent, the recycling rate for aluminium is unsurprisingly high in Europe.

CIRCULAR PRODUCT DESIGN RIGHT FROM THE START

Another benefit is reducing materials to the essentials, in line with our Circular Design Rules. SLOTLIGHT infinity II consists of just three main components, which can be replaced and renovated easily: the channel, the LED batten containing the lighting technology and the optics. All three components are assembled in a way that enables them to be accessed and disassembled easily for maintenance or renovation at any time. This principle is called “design for disassembly”.

REGIONAL PRODUCTION SAVES CO₂ AND LOGISTICS COSTS

Regional production at Zumtobel's headquarters also has a positive impact on the sustainability of the manufacturing process: the “Made in Austria” product range ensures the value creation from production remains within the EU. Moulded parts, the powder coating and the LED electronics are produced locally. This saves long routes, additional logistics costs and CO₂ for Zumtobel.



SLOTLIGHT infinity II - Made in Austria

STANDARDISED PACKAGING MATERIAL, SIMPLE RECYCLING

The light lines are packaged for delivery to customers in such a way that they are fully protected while using as few materials as possible. 100% cardboard packaging is used – which can easily be returned to the raw material cycle. The products are delivered on pallets.

RENOVATION: TECHNICAL UPDATE WITH MINIMAL EFFORT

Always thinking beyond tomorrow, Zumtobel provides upgrade kits specially designed for SLOTLIGHT infinity II, which update sensitive components such as the batten (which holds the lighting technology) and optics to the latest state-of-the-art options. Retrofitting can be completed quickly and easily thanks to the modular design. The aluminium channel itself remains in place. The room and ceiling surfaces are left untouched. Thanks to the circular design concept of the SLOTLIGHT product family, customers are spared a costly full renovation.

THE CHANNEL THAT (ALMOST) LASTS FOREVER

SLOTLIGHT infinity II channels can remain in place for multiple usage cycles: thanks to the outstanding material properties of aluminium, they barely age. As the “backbone of the building infrastructure”, they can stay in the property and be retrofitted time and again for generations to come, for example with sensors and in the future also with spotlights or downlights.

INTEGRATED LIGHTING SOLUTIONS

The purchase is not the end of a successful customer relationship – it's just the beginning. From artificial or emergency light to lighting controls or building infrastructure, as a single-source provider of state-of-the-art lighting solutions, Zumtobel supports its customers with everything from initial product ideas to the recirculation of raw materials. It provides expert project management for turnkey lighting solutions from a single source at a plannable cost – from the first draft, suitable financing and on-time installation to maintenance, conversion and retrofitting. The Zumtobel promise: to use light to create living spaces that can be successfully used and enjoyed for generations to come.

CUSTOMER-SPECIFIC PRODUCT DEVELOPMENT

When standardised lighting solutions reach their limits, Zumtobel also implements customised products on request, combining unconventional thinking with established processes, fresh ideas and plannable implementation to create solutions that are as unique as the customers themselves. In doing so, Zumtobel always keeps an eye on current market requirements – and transforms ideas into its future product portfolio.

DIGITALISE BUILDINGS

In future, the lighting infrastructure of SLOTLIGHT infinity II can also be used as a starting point for networking entire buildings. Whether measuring presence, analysing air quality or tracking goods, sensor technology and specific software open up access to the numerous possibilities of the Internet of Things (IoT). Zumtobel experts provide support by transparently mapping and optimising extensive building processes.

RENT LIGHT INSTEAD OF PURCHASING

Zumtobel can provide innovative financing options for a lighting project on request. With "Light as a service", customers receive their light at fixed monthly rates instead of buying it. To this end, Zumtobel takes on all tasks associated with lighting – including project design, turnkey delivery and recurring maintenance work. Light as a complete solution: we make sure you have the perfect light, so you can focus on your core business.



ASSESSMENT

Collaboration begins with a comprehensive assessment of the situation: What are the requirements of the lighting solutions? Which parameters should be adhered to, where should savings be made? Based on this preliminary work, concrete, measurable goals can be formulated – the foundation of every successful lighting project.



PLANNING

Zumtobel designs lighting to meet individual customer requirements. This includes lighting planning, lighting design and the organisation of the lighting controls and safety lighting. Customers have access to the product configurator for SLOTLIGHT infinity II, which can take them to a customised parts list and the related data sheet in just a few clicks. Be it optics, light colours or light distribution: depending on their wishes and specific usage situation, they can obtain a customised light line.



MAINTENANCE

Even after commissioning, Zumtobel ensures that existing building lighting solutions continue to function at the highest level for as long as possible, allowing them to play their part in creating not only an optimal user experience, but also a living space that can be used sustainably, in the best sense of the word, for generations to come. The Zumtobel in-house service team offers a wealth of in-depth knowledge and practical expertise – not only in the DACH region but also in many other countries worldwide.



RECOVERY

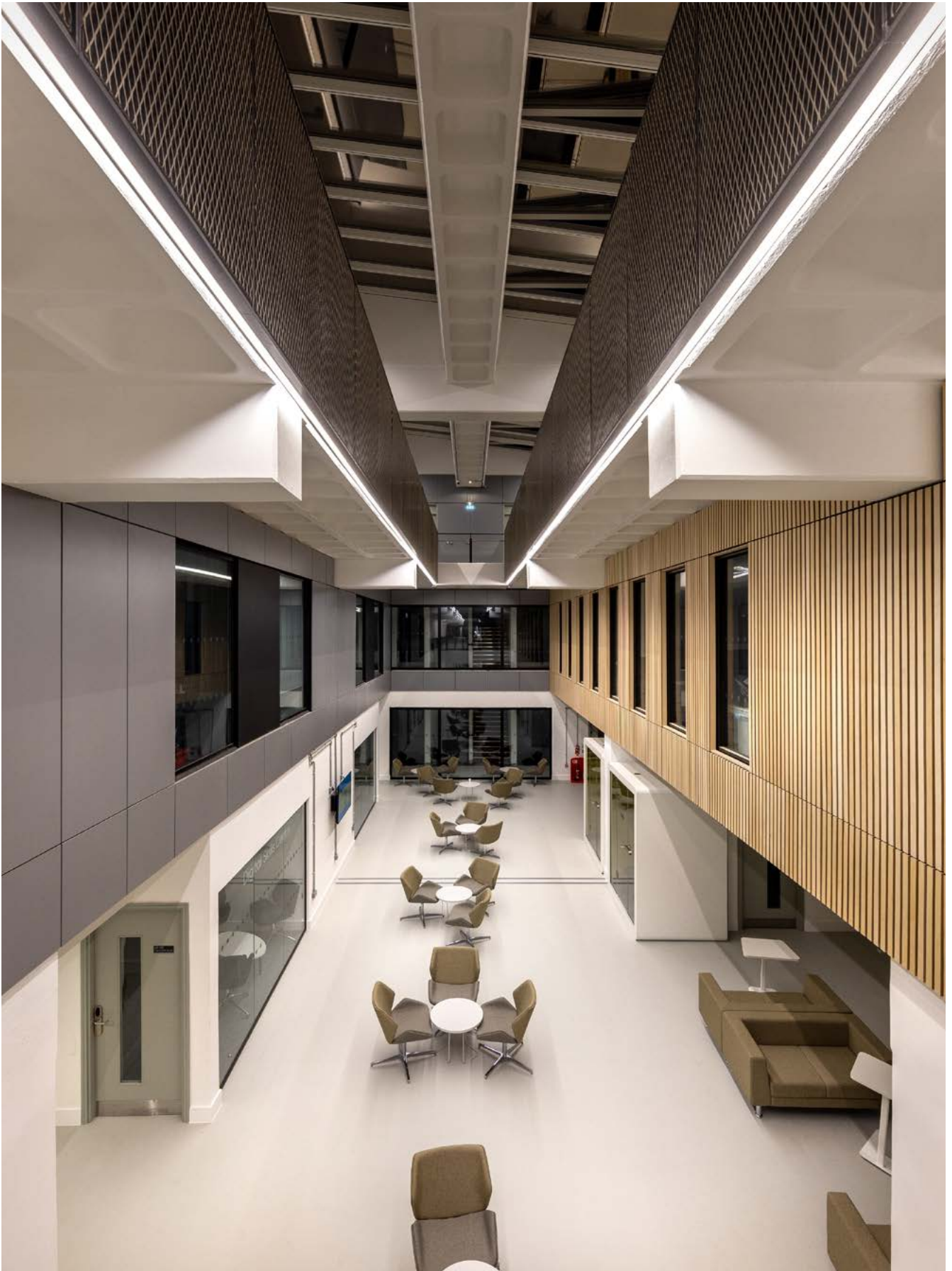
Zumtobel's customer support continues right to the end of the product life cycle and also includes the recovery and recycling of valuable raw materials. In collaboration with specialised partner companies such as Concular – a platform for resource-efficient construction, in line with the core principles and values of the circular economy, Zumtobel is developing returns and recycling processes. This makes the products and solutions far more sustainable, for everyone.



Scott Sports SA, Givisiez | CH



Metro Bilbao | ES



**MRC
RECESSED PLASTERBOARD**

**MRT
RECESSED TECHNICAL**



Light output

100% direct light

Dimensions Channel

1-4 Meter (250mm steps)

Dimensions Battens

1000, 1250, 1500, 1750, 2000mm (3000K, 4000K, tunableWhite)
1250, 1500, 1750, 2000, 2250mm (RGBW)

Lumen packages

High Efficiency HE	1600 lm/m
High Output HO	2500 lm/m
Very High Output VHO	3500 lm/m
Minicell MC	3500 lm/m
RGBW	1100 lm/m

Colour rendering

CRI>80
CRI>90

Colour temperature

3000K, 4000K, tunableWhite 2700-6500K,
RGBW (W-4000K)

Efficiency

Polycarbonat PC	up to 130lm/W
Polycarbonat Office PCO	up to 119lm/W
Wallwasher WW	up to 113lm/W
Minicell MC	up to 133lm/W
Drop Diffuser DD	up to 158lm/W

Controls

EVG, LDE and MWS Presence/Daylight Sensor

Emergency

E3D
Central battery emergency

Shapes

I Linear
L Corner
└ Shape
□ Rectangular shape

I Linear
L Corner
└ Shape
□ Rectangular shape
X connector
T connector
L connector

Optics

Polycarbonat PC, Polycarbonat Office PCO,
Wallwasher WW,
Minicell MC (BKG, BKM, SRG, SRM, WHG, WHM)
Blind Cover (WH, SR, BK)

Polycarbonat PC, Polycarbonat Office PCO,
Wallwasher WW, Drop Diffuser DD,
Wallwasher WW (BKG, BKM, SRG, SRM, WHG, WHM)
Blind Cover (WH, SR, BK)

Housing colour

White WH, RAL 9016

White WH, RAL 9016
Silver SR, RAL 9006
Black BK, RAL 9005

Protection

IP20/IP54 PC/PCO/WW
IP20 MC, BWS, Blind Cover and X/L/T
BWS PC/PCO/WW with EC BWS Set

IP54 PC/PCO/WW with EC IP54 Set
IP40 PC/PCO/WW/DD with EC Set
IP20 MC, BWS, Blind Cover and X/L/T
BWS PC/PCO/WW with EC BWS Set

**MSC
SURFACE AND SUSPENDED
RECESSED CONCRETE**

**MSP
SUSPENDED D/I AND I/D**



100% direct light

70% direct light / 30% indirect light
50% direct light / 50% indirect light
30% direct light / 70% indirect light

1-4 Meter (250mm steps)

1000, 1250, 1500, 1750, 2000mm (3000K, 4000K, tunableWhite)
1250, 1500, 1750, 2000, 2250mm (RGBW)

High Efficiency HE	1600 lm/m
High Output HO	2500 lm/m
Very High Output VHO	3500 lm/m
Minicell MC	3500 lm/m
RGBW	1100 lm/m

CRI > 80
CRI > 90

3000K, 4000K, tunableWhite 2700-6500K,
RGBW (W-4000K)

Polycarbonat PC	up to 130 lm/W
Polycarbonat Office PCO	up to 119 lm/W
Wallwasher WW	up to 113 lm/W
Minicell MC	up to 133 lm/W
Drop Diffuser DD	up to 158 lm/W

EVG, LDE and MWS Presence/Daylight Sensor

E3D

Central battery emergency

I Linear
L Corner
┌ Shape
□ Rectangular shape
X connector
T connector
L connector

I Linear
L Corner
┌ Shape
□ Rectangular shape

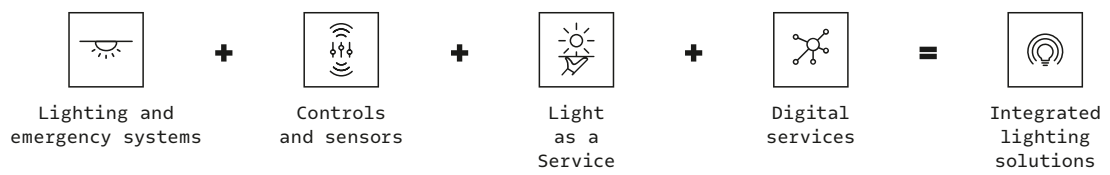
Polycarbonat PC, Polycarbonat Office PCO,
Wallwasher WW, Drop Diffuser DD,
Wallwasher WW (BKG, BKM, SRG, SRM, WHG, WHM)
Blind Cover (WH, SR, BK)

White WH, RAL 9016
Silver SR, RAL 9006
Black BK, RAL 9005

IP54 PC/PCO/WW with EC IP54 Set
IP40 PC/PCO/WW/DD with EC Set
IP20 MC, BWS, Blind Cover and X/L/T
BWS PC/PCO/WW with EC BWS Set

IP20

T H E L I G H T



zumtobel.com/contact