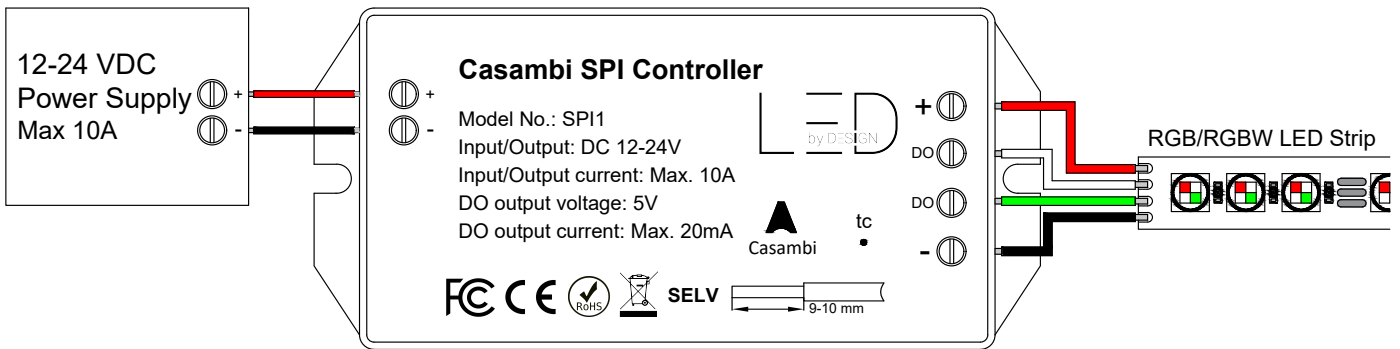


Item name	Casambi SPI Controller
Ordering code	SPI1
Item code	SPI1
Date	23-01-2024

Casambi SPI Controller



Description

Casambi to SPI controller by LED BY DESIGN is a user friendly and easy to use device. This controller can work with SPI Pixel control protocols and supports most of the common IC's used in the industry. This device can control up to 512 pixels (IC's) RGB and RGBW.

The Casambi app provides simple and easy control of the LED strips, animation, scene timers, and more.

Users can select a preset program from 255 options, set the chase speed and dim levels, The app also enables the use of the SPI-controlled LED source to work in static mode.

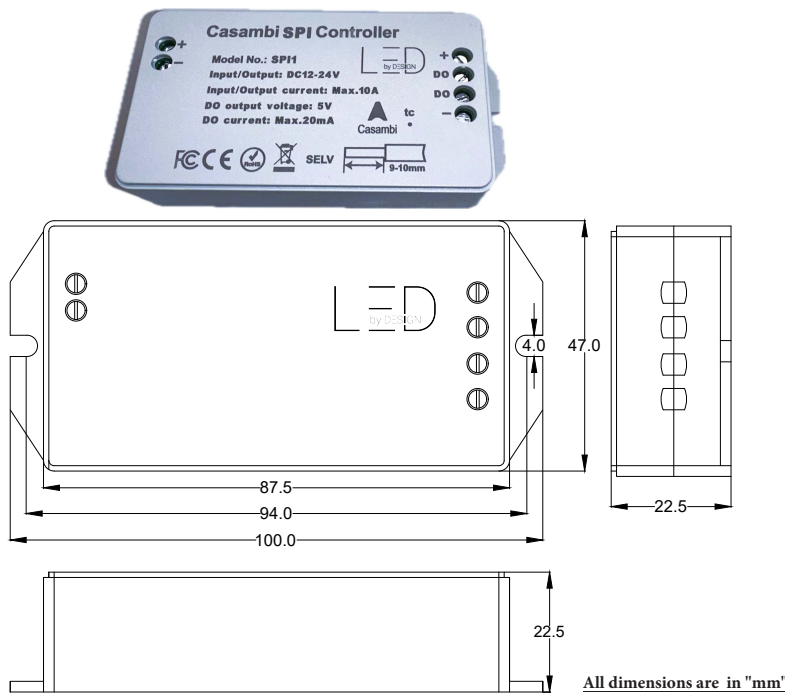
Casambi SPI can support the following IC's:

UCS 1903, UCS 1904, USC 2903 UCS 2904 UCB 1909, UCS 1912 UCS 2909 UCS 2912, WS2811 WS2812 SM16703

Technical Information

Input Voltage	12-24V DC
Max. input current	10A
Output current	Max. 20mA
Output Voltage	5V
Max Output Power	120W @12VDC / 240W @24VDC
Wire type	14-22AWG
Device Control	PWM by Casambi App
Case size	100 x 47 x 23 mm
Weight	51g
Protection	IP20
Operating temp	-20 to 50°C
Installation	Remote
Total Supported Modes	255 Modes
Control options	Available profiles
CHIP range	RGB,RGBW
Channel order	Any

Certificates:
CE, FCC, LVD(2014/35/EU)**



All dimensions are in "mm"

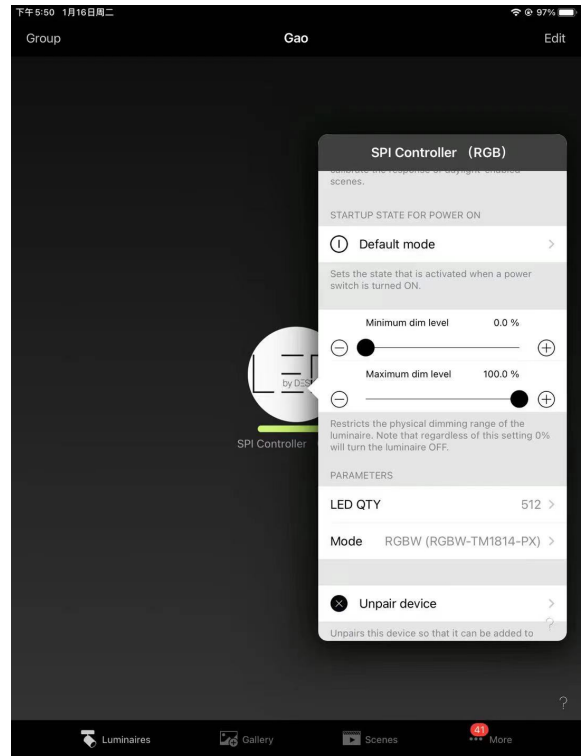
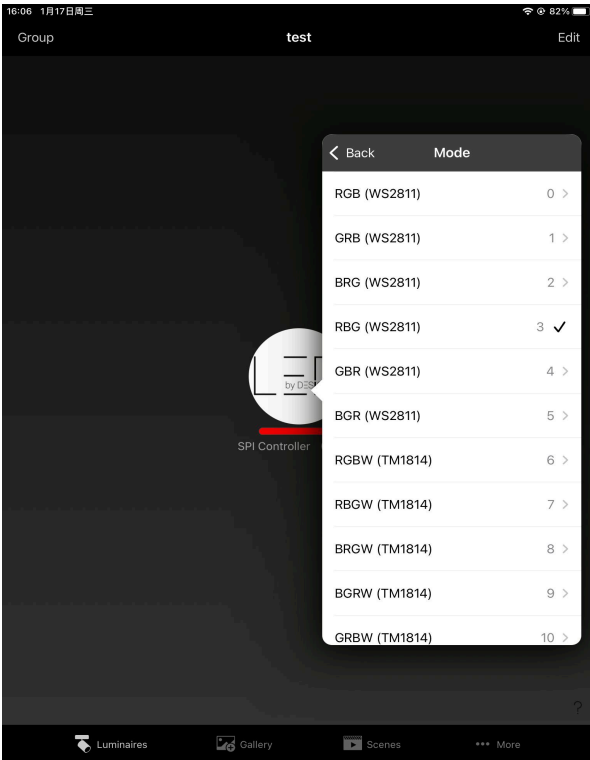


NOTES: **Low Voltage Directive (2014/35/EU): The products applicative voltage is under 75VDC of LVD minimum adopted voltage. For more information and user manual please contact: sales@ledbydesign.asia

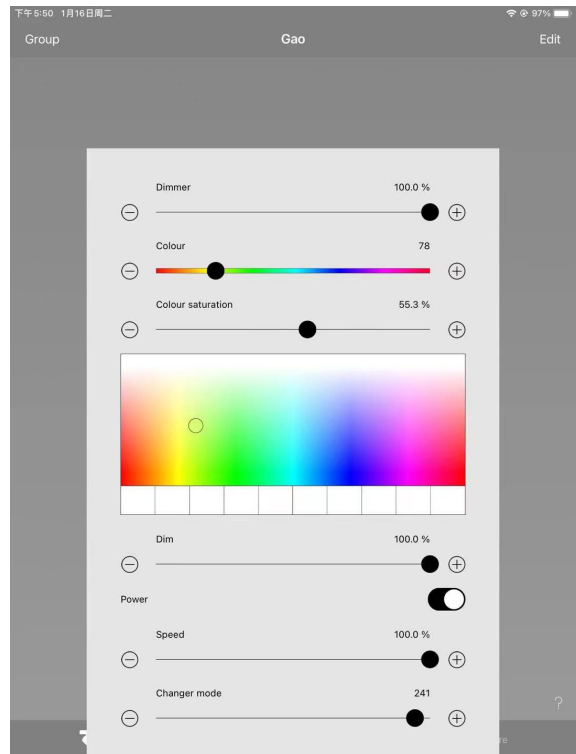
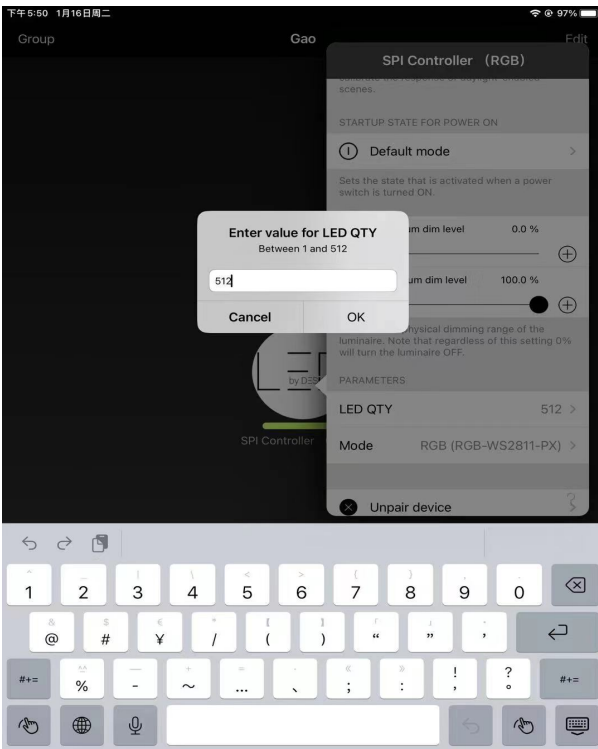
We reserve the right to change specifications without prior notification.

Item name	Casambi SPI Controller
Ordering code	SPI1
Item code	SPI1
Date	23-01-2024

Screenshots of the UI/Settings page:



NOTE: For RGB there are additional supported modes: WS2812, TM1804, UCS1903, SM16703



Total 255 Modes are supported

NOTES: **Low Voltage Directive (2014/35/EU): The products applicative voltage is under 75VDC of LVD minimum adopted voltage. For more information and user manual please contact: sales@ledbydesign.asia

We reserve the right to change specifications without prior notification.